



Zebra h33.3×w53.0cm / masking medium & acrylic on canvas / 2021

## Ryuma IMAI Solo Exhibition -creatures living by chance 2021-

Period : November 2nd to 13th, 2021 \*closed on November 9th

Open : 13:00-19:00 \*till 18:00 on the last day

Venue : H-art Beat Gallery | 2-38-10 Tako Bldg. 2F Kanda-Jimbocho, Chiyoda-ku, Tokyo 101-0051 Japan

H-art Beat Gallery is pleased to announce Ryuma IMAI Solo Exhibition will be held from November 2nd to 13th.

Ryuma IMAI, born in Tokyo in 1976, was brought up with his father, a painter - Toshimitsu IMAI 今井俊満 (1928-2002) and learned by father's original education about art and art history, and also learned drawings in Academia de la Grande Chaumière in 1995 while his father was making his artworks in Paris. After that, he started his artist carrier from 2008.

The originality of Ryuma IMAI's artwork is that animals and persons portrayed by him with enamel and acrylic paint are full of life, which represents their innate vitality.

IMAI, without any hesitation, places lines to display the moments animals start moving or the moments they stop and add animal instincts to their eyes. In his works depicting humans, he also places lines to displays complex emotions embedded in humans and expressions of instants difficult to describe in words. The combination of his enamel contours and unique coloration leave strong impressions to the minds of those who encounter any of his artworks.

Actually, IMAI does not "draw" lines with enamel; in fact, he pours paint onto base materials such as canvases and paper without looking at the sketches or making a rough draft. Therefore, he creates animals and humans from his accumulated memories while accepting the unpredictable, uncontrollable flows and widths of his curves.

Everyone goes on with their daily lives or their lifetime by accepting the unpredictable and the absurdities of life. Likewise, IMAI conducts his life and produces works by positively and open-mindedly responding to such

CV :

- 1976 Born in Tokyo, Japan
- 1995 Learned at Académie de la Grande Chaumière, Paris  
Learned art as assistant in Toshimitsu IMAI(Father) Atelier
- 2008 Gallery Art Wing (Kanagawa / Japan)
- 2009 Fukuda Art Gallery G+5 (Niigata / Japan)
- 2010 Yamaki Art Gallery (Osaka)
- 2013 7TYPES (Art Gallery in Matsuzakaya Department Store, Nagoya / Japan)
- 2014 Art Book “Creatures Living by Chance” published (Kyuryudo Art Publishing, Tokyo)  
Art Gallery in Matsuzakaya Department Store (Nagoya / Japan)
- 2015 Karuizawa New Art Museum (Nagano / Japan)
- 2016 Animals in Art (The Menard Art Museum, Aichi / Japan)  
H-art Beat Gallery (’17, ’19, ’20)
- 2019 The Collection of Menard Art Museum 2019 (The Menard Art Museum, Aichi / Japan)  
Gallery by the Harbour (Hong Kong)
- 2020 The Collection of Menard Art Museum - "Europe for the Japanese Artists" (The Menard Art Museum, Aichi / Ja

Collections : Menard Art Museum (Aichi / Japan), Noku Kyoto Hotel (Kyoto / Japan)

J's Bar Bistro • THE ROYAL GARDEN (Hong Kong), Nakano Residential Museum (Niigata / Japan),  
and Many Private Collections

Collaboration : “Rydeen Beer ” Label (Sarukura Mt. Craft Beer Brewery • Hakkai Brewery / Niigata)

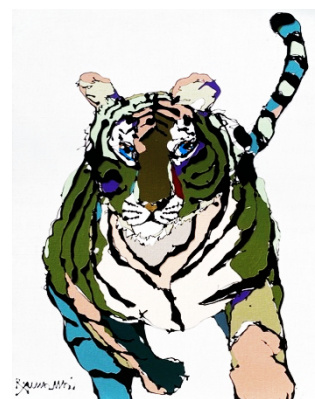
Exhibiting Artworks :



Cat / 60.6×72.7cm / medium & acrylic on canvas / 2021



Toy Poodle / 53.0×41.0cm / enamel & acrylic on canvas / 2021



Tiger / 91.0×72.7cm / enamel & acrylic on canvas / 2021

H-art Beat Gallery

101-0051 東京都千代田区神田神保町2-38-10 多幸ビル2F | 2-38-20 Tako Bldg. 2F Kanda-Jimbocho, Chiyoda-ku, Tokyo 101-0051 Japan

Tel. & Fax. : 81-3-6256-8986 e-mail : masaru\_nishiyama@hartbeat.co.jp URL: <http://hartbeat.co.jp>

Director : Masaru Nishiyama